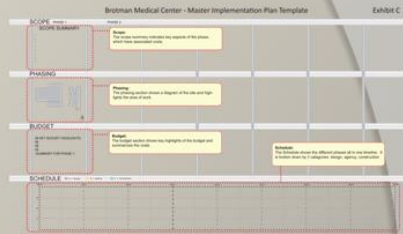
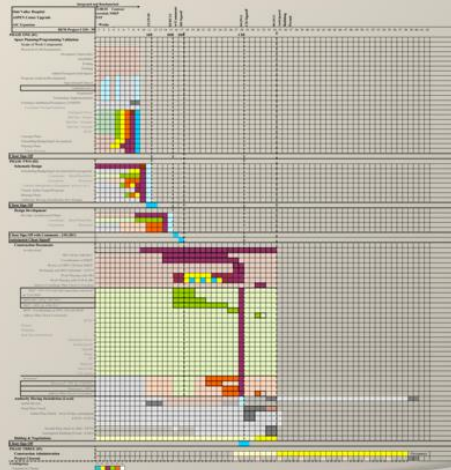


MASTER PLANNING

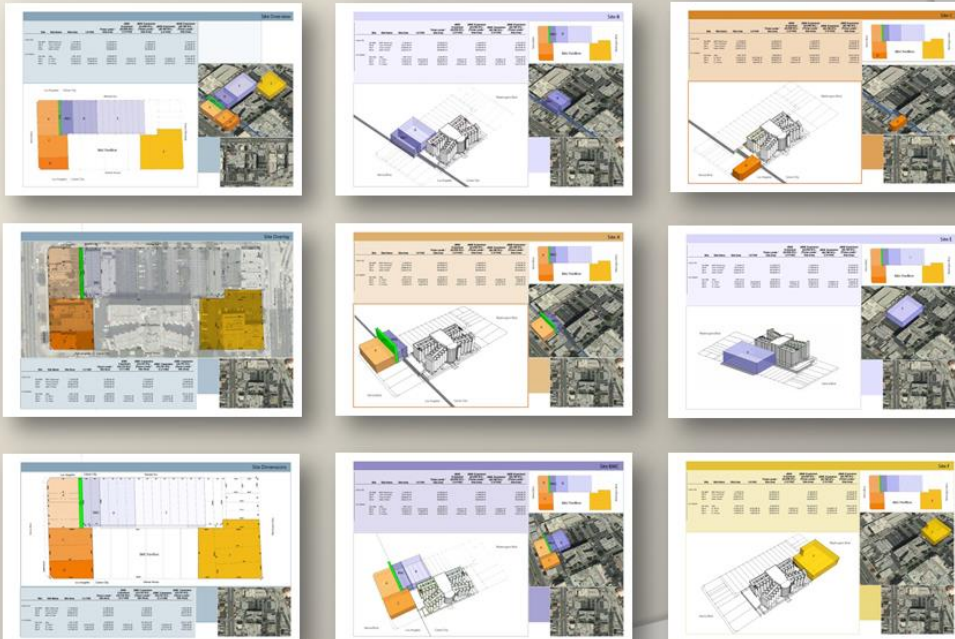
PROJECT DEVELOPMENT

Comprehensive Master Planning Steps				
Measurements	Factors	Options	Criteria	Consequences
Strategic Review Vision Market Institution Service Lines JCI Priorities Trends Partners	Projections Key Events Market program gaps Service Visions Complexity Operational Goals	New Operations Zoning Parking Long-term Framework Neighborhood considerations	Criteria Review Selection of Preferred Option Planning Schedule Operational requirements Financial performance	Operational implementation Schedule & decision milestones & underlying assumptions, or concrete plan Operational performance Length or stability to design and operating needs Management structure and roles for example
Staff Credentials Parking Land Use	Technology Options Master Plan driven	Site and Facility Alternative plans Planning Scenario	Cost Estimates New and Facilities Information technology Programs	System prioritization
Building/Mechanical Electrical/Plumbing Hardware Activity Space Utilization Operations Throughput Flexibility Technology				



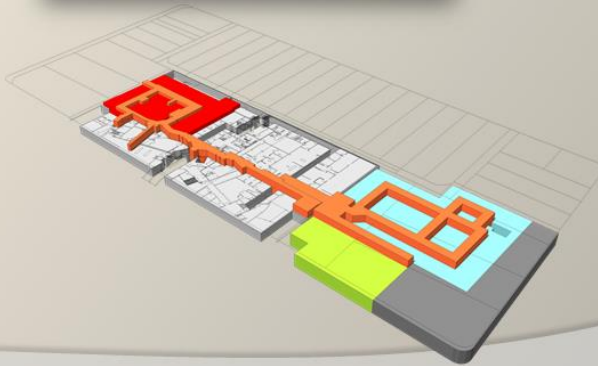
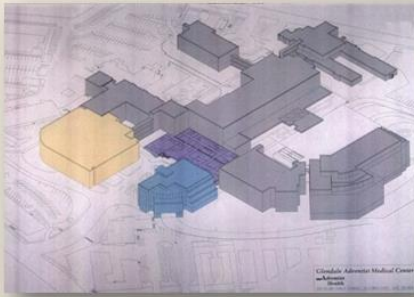
MASTER PLANNING

SITE SELECTION ANALYSIS



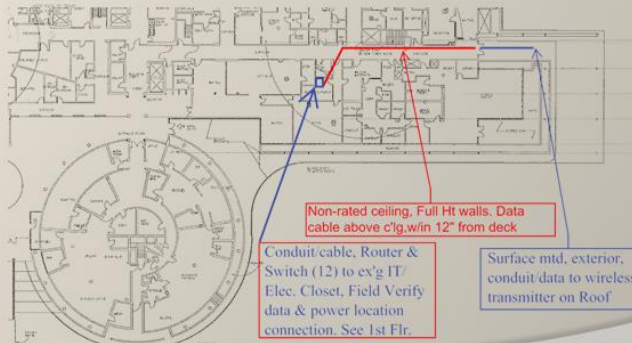
MASTER PLANNING

PROGRAMMING, ANALYSIS & DEVELOPMENT



CONCEPTUAL PROGRAM

VALLEY PRESBYTERIAN HOSPITAL
NOBLE PARKING



Use Study

Outpatient Clinic (OSHPD 3) and Oncology



Business Office and Wound Care (Outpatient Service)



Site Planning

Cultural Center and Museum

